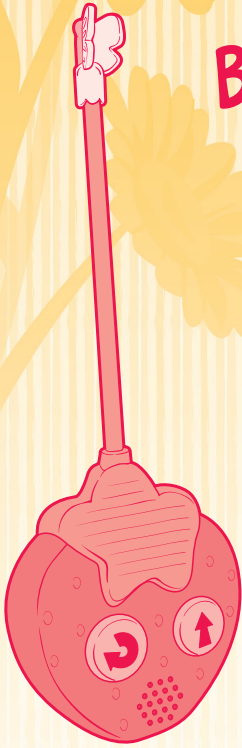


AGES 4+

Strawberry Shortcake™

Berry Cruiser RC™



Includes: Remote control,
vehicle and 1 scented mini-doll.

Remote Control

 **x2** 1.5VAA or R6 size

BATTERIES INCLUDED

Replace with 2 x 1.5V "AA" or R6 size batteries.
Alkaline batteries recommended. Phillips/cross head
screwdriver (not included) needed to replace batteries.

Vehicle

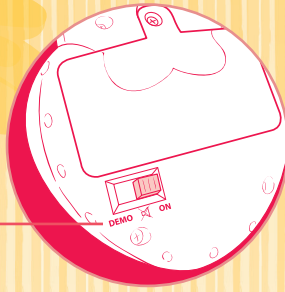
 **x3** 1.5VAA or R6 size
NOT INCLUDED

BATTERIES REQUIRED

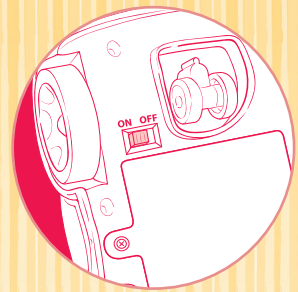
Alkaline batteries recommended. Phillips/cross head
screwdriver (not included) needed to insert batteries.

GETTING STARTED

Remote Control



Vehicle



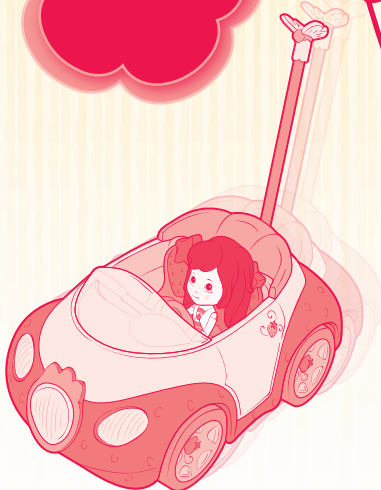
The remote control is packaged in "DEMO" mode. Activate its full range of features by moving the DEMO/ ~~ON~~ /ON switch to the "ON" position. Switch is located on the back of the remote control. The vehicle's ON/OFF switch is located on the bottom. Turn on the vehicle by moving the switch to the "ON" position.



TIP FOR PARENTS: To turn off sounds for quiet play, move the switch on the back of the remote to the ~~ON~~ position.

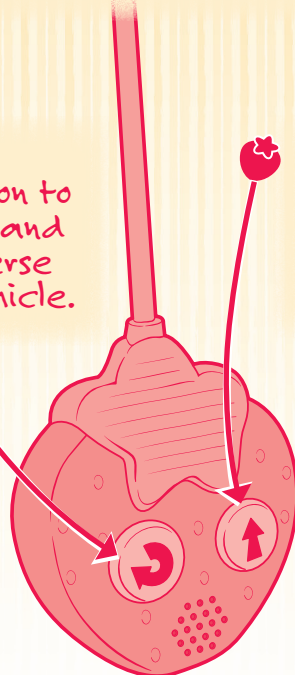
NOTE: When the vehicle's strawberry headlight is illuminated, that indicates that the vehicle is turned on. The vehicle uses battery power whenever its switch is in the "ON" position. To help conserve battery life, move the switch to "OFF" when you're not playing with the toy. The remote control has an automatic shut off feature.

TO PLAY

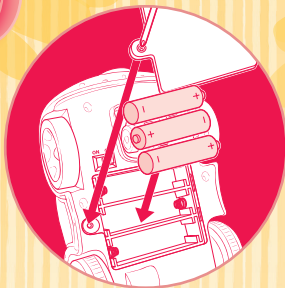


Press button to turn and reverse vehicle.

Press button to move vehicle forward.

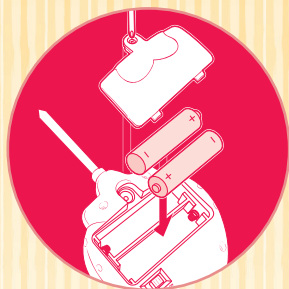


BATTERIES



TO INSTALL VEHICLE BATTERIES

Use a Phillips/cross head screwdriver (not included) to loosen screw in battery compartment cover (screw remains attached to cover). Remove cover. Insert 3 x 1.5V "AA" or R6 size batteries. Alkaline batteries recommended. Replace cover and tighten screw.



TO REPLACE REMOTE CONTROL BATTERIES

Use a Phillips/cross head screwdriver (not included) to loosen screw in battery compartment cover (screw remains attached to cover). Remove cover. Remove and discard old batteries. Replace with 2 x 1.5V "AA" or R6 size batteries. Alkaline batteries recommended. Replace cover and tighten screw.

IMPORTANT: BATTERY INFORMATION

! CAUTION:

1. Always follow the instructions carefully. Use only batteries specified and be sure to insert them correctly by matching the + and - polarity markings.
2. Do not mix old batteries and new batteries or standard (carbon-zinc) with alkaline batteries.
3. Remove exhausted or dead batteries from the product.
4. Remove batteries if product is not to be played with for a long time.
5. Do not short-circuit the supply terminals.
6. Should this product cause, or be affected by, local electrical interference, move it away from other electrical equipment. Reset (switching off and back on again or removing and re-inserting batteries) if necessary.
7. **RECHARGEABLE BATTERIES:** Do not mix these with any other types of batteries. Always remove from the product before recharging. Recharge batteries under adult supervision. **DO NOT RECHARGE OTHER TYPES OF BATTERIES.**

TROUBLESHOOTING

If your vehicle does not respond, please switch OFF and back ON again or replace the batteries in the vehicle and remote control.



FCC STATEMENT

This device complies with part 15 of the FCC Rules. Operation is subject to the following two conditions: (1) This device may not cause harmful interference, and (2) this device must accept any interference received, including interference that may cause undesired operation.

This equipment has been tested and found to comply with the limits for a Class B digital device, pursuant to part 15 of the FCC Rules. These limits are designed to provide reasonable protection against harmful interference in a residential installation. This equipment generates, uses and can radiate radio frequency energy, and, if not installed and used in accordance with the instructions, may cause harmful interference to radio communications. However, there is no guarantee that interference will not occur in a particular installation. If this equipment does cause harmful interference to radio or television reception, which can be determined by turning the equipment off and on, the user is encouraged to try to correct the interference by one or more of the following measures:

- Reorient or relocate the receiving antenna.
- Increase the separation between the equipment and receiver.

CAUTION: Changes or modifications not expressly approved by the party responsible for compliance could void the user's authority to operate the equipment.



AMERICAN GREETINGS

Product and colors may vary.

Strawberry Shortcake™ and related trademarks © 2009 Those Characters From Cleveland, Inc. Used under license by Hasbro, Inc. American Greetings with rose logo is a trademark of AGC, LLC.

®* and/or TM* & © 2009 Hasbro, Pawtucket, RI 02862 USA. All Rights Reserved. TM & ® denote U.S. Trademarks.

19279 PN 7013850000

